

## TREE SPECIES SITE MATCHING IN KENYA OCTOBER 2018

ECO-ZONE	OND Average Seasonal Rainfall	OND 2018 Forecast average season rainfall	Tree Species	Common Name	Management Options	End Use	Rotation	Tree/fruit Nurseries	Altitude (m)	Preferred Soil Type
I (Over 1800 mm rainfall)	900 mm	1000 mm	<i>Ocotea usambarensis</i>	Camphor	Plantation/ mixed systems	Timber	Medium to long (30-60 yrs)	<ul style="list-style-type: none"> <li>• <a href="#">KFS Ecosystem Conservators</a></li> <li>• <a href="#">KEFRI Centers</a></li> </ul>	1600-2500	Volcanic deep loamy soils
			<i>Acacia mearnsii</i>	Black wattle	Woodlot	Fuel wood, tannins	Short (5-10 years)		1600-2000	Volcanic deep loamy soils
			<i>Polyscias kikuyuensis</i>	Mutati (Kik)	Mixed, enrichment and natural systems	Peeler wood for boards	Medium (30-40 yrs)		1600-2500	Variable, red to loamy clay soils
			<i>Prunus africana</i>	Muiri (Kik)	Plantation/mixed /enrichment planting systems	Timber, medicinal	Medium to long (30-60 yrs)		1600-2500	Variable from highland red loamy to volcanic deep soils
			<i>Pinus patula</i>	Pine	Plantation	Timber/ paper	Short (16-20 yrs pulp) (25-30 yrs for timber)		1600-3000	Deep wet loams, but adaptable to variable soils but not clay and water-logged soils
			<i>Vitex keniensis</i>	Meru oak	Plantation /natural management system	Timber, ornamental, soil improver	Medium to long (30-60 yrs)		1700-2200	Deep volcanic, red to loamy clay soils

ECO-ZONE	OND Average Seasonal Rainfall	OND 2018 Forecast average season rainfall	Tree Species	Common Name	Management Options	End Use	Rotation	Tree/fruit Nurseries	Altitude (m)	Preferred Soil Type
			<i>Podocarpus gracilior</i>	Podo	Plantation /mixed /amenity	Timber, amenity	Medium to long (30-60 yrs), (pulp 16-20 yrs) (timber 25-30 yrs)		1800-2400	Red to loamy clay and volcanic soils
			<i>Cupressus lusitanica</i>	Cypress	Plantation	Timber/hedge /shelter belts	Short (25-30 yrs)		1800-3000	Well adaptable to variable highland soils
			<i>Acacia melanoxylon</i>	Black wood	Plantation/mixed planting	Soil conservation, timber, fuel	Short (8 yrs) (30 yrs timber)		2000-3000	Variable deep red to loamy sandy soils
			<i>Arundinaria alpina</i>	Bamboo (Murangi)	Plantation, boundary, groves, soil protection	Building, fencing, handicraft, soil protection	Short (6-10 yrs)		2200-3000	Deep red to volcanic loamy soils
II (1400 - 1800 mm rainfall)	700-900	800mm	<i>Markhamia lutea</i>	Markhamia (Eng), Siala (Luhya)	Woodlot/amenity/agroforestry	Timber/amenity soil nutrient enhancement, apiculture, ornamental	Short (15-30 yrs)	<ul style="list-style-type: none"> <li>• <a href="#">KFS Ecosystem Conservators</a></li> <li>• <a href="#">KEFRI Centers</a></li> </ul>	>1400	Red loam to clay loamy soils
			<i>Chlorophora excelsa</i> (Syn. <i>Milicia excelsa</i> )	Mvule	Plantation/mixed planting	Timber/Shade	Medium to long (30-60 yrs)		0-1400	Variable sandy to deep soils

ECO-ZONE	OND Average Seasonal Rainfall	OND 2018 Forecast average season rainfall	Tree Species	Common Name	Management Options	End Use	Rotation	Tree/fruit Nurseries	Altitude (m)	Preferred Soil Type
			<i>Grevillea robusta</i>	Mukima (Kik)	Plantation, hedge planting, agroforestry, woodlot, shelterbelt system	Timber, fuel, fodder, poles	Short (6 yrs for pole)(30 yrs for timber)		0-2500	Mostly variable but loves deep red soils
			<i>Phoenix reclinata</i>	Wild date Palm	Mixed system amenity	Water conservation, basketry, ornamental	Medium to long (30-60 yrs)		0-3000	Swampy and riparian soils
			<i>Croton megalocarpus</i>	Mukinduri	Plantation/mixed /enrichment/ natural systems	Fuel, poles, construction, peeler wood	Short to Medium (15-25 yrs)		1000-2000	Variable deep red to loamy sandy soils
			<i>Syzygium species</i>	Mukoe (Kik) waterberry (Eng)	Mixed system in water courses	Water conservation, timber, edible fruits, medicinal	Medium to long (30-60 yrs)		1000-2500	Swampy and riparian soils
			<i>Bischofia javanica</i>	Bishop wood	Plantation, enrichment planting	Timber	Short (30-40 yrs)		1200-1600	Deep red/loamy soils
			<i>Maesopsis eminii</i>	Mutere	Plantation/mixed /enrichment systems	Timber, reclamation	Short (25-50 yrs)		1200-1600	Deep red/loamy soils, deep, moist and fertile sandy loam soils

ECO-ZONE	OND Average Seasonal Rainfall	OND 2018 Forecast average season rainfall	Tree Species	Common Name	Management Options	End Use	Rotation	Tree/fruit Nurseries	Altitude (m)	Preferred Soil Type
			<i>Zanthoxylum gilletii</i> (Syn. <i>Fagara macrophylla</i> )	East African satinwood, Munyenye (Kik)	Plantation, enrichment planting	Timber, medicinal, ornamental, shade	Medium(30-40yrs)		1200-1900	Deep red to sandy loamy soils
			<i>Cordia abyssinica</i>	Muringa	Plantation	Timber/shade, apiculture	Medium to long (30-60 yrs)		1400-2500	Variable and wide spectrum but deep
			<i>Eucalyptus saligna/grandis</i>	Sydney Blue gum /Rose blue gum	Plantation /woodlots	Fuel, transmission posts, construction, timber, pulp	(Short 15-25 yrs for timber) 5-12 yrs for other uses)		1400-2500	Variable, medium to deep soils
			<i>Sesbania sesban</i>	Sesbania	Agroforestry/ mixed system conservation	Firewood, soil enrichment, water	Short (2-3 yrs)		1400-2500	Variable
			<i>Olea welwitschii</i>	Elgon Teak	Plantation/mixed natural system	Timber	Long (80-120 yrs)		1600-2400	Deep loamy soils
			<i>Eucalyptus regnans</i>	Mountain ash	Plantation /woodlots	Fuel, poles, building, timber	Short (4-6 yrs-poles) (10-20 yrs for timber)		2500-3000	Deep highland forest soils
			<i>A. mearnsii</i>	Black wattle	Plantation/ woodlot	Tanning, fuel	Short - (6-10 yrs)		1600-2000	Deep to medium red to red loam

ECO-ZONE	OND Average Seasonal Rainfall	OND 2018 Forecast average season rainfall	Tree Species	Common Name	Management Options	End Use	Rotation	Tree/fruit Nurseries	Altitude (m)	Preferred Soil Type
III (800-1400 mm rainfall) HIGHLAND REGION	400-700	600mm	<i>Brachylaena huillensis</i>	Muhugu (Kik)	Mixture/enrichment/natural system	Timber, fuel, carvings, construction, fencing, essential oils	Long (60-100 yrs)	<ul style="list-style-type: none"> <li>• <a href="#">KFS Ecosystem Conservators</a></li> <li>• <a href="#">KEFRI Centers</a></li> </ul>	200 - 1850	Red loamy to clay loam sandy soils. red, volcanic clayey loams in plateau forests and red soils in the coastal belts
			<i>Phoenix reclinata</i>	Wild date palm	Mixed system, amenity	Water conservation, basketry, ornamental	Medium to long (30-60 yrs)	<ul style="list-style-type: none"> <li>• <a href="#">KFS Ecosystem Conservators</a></li> <li>• <a href="#">KEFRI Centers</a></li> </ul>	0-3000	Swampy and riparian soils
			<i>Vachellia xanthophloea</i> (Syn: <i>Acacia Xanthophloea</i> )	Olerai (Maa)	Mixed systems	Water & soil conservation, soil enrichment, apiculture, medicinal	Medium (30-40yrs)		1000-2000	Riparian soils
			<i>Croton megalocarpus</i>	Mukinduri	Mixed, woodlot, boundary agroforestry managements	Fuel, shelter wood, charcoal, hedge, boundary planting, medicinal	Short (10-25 yrs)		1000-2000	Well adaptable to variable highland soils
			Syzgium species	Mukoe (Kik)	Mixed system in water courses	Water conservation, timber	Medium to long (30-60 yrs)		1000-2500	Swampy and riparian soils

ECO-ZONE	OND Average Seasonal Rainfall	OND 2018 Forecast average season rainfall	Tree Species	Common Name	Management Options	End Use	Rotation	Tree/fruit Nurseries	Altitude (m)	Preferred Soil Type
			<i>Cordia abyssinica</i>	<i>Muringa</i>	Plantation/mixed , woodlots, amenity, agroforestry	Timber, amenity, fuel	Medium to long (30-60 yrs)		1400-2500	Mainly red loamy soils
			<i>Eucalyptus saligna</i>	<i>Sydney blue gum</i>	Plantation/ woodlots/ shelterbelts	Fuel, poles, posts, fencing, timber	Short (5-12 yrs for poles) (15-25 yrs – timber)		1400-2500	Highland loamy Soils
			<i>Eucalyptus grandis</i>	<i>Rose blue gum</i>	Plantation/ woodlots/ shelterbelts	Fuel, poles, posts, fencing, timber	Short (5-12 yrs for poles) (15-25 yrs – timber)		1400-2500	Highland loamy Soils
			<i>Sesbania sesban</i>	<i>Sesban</i>	Agroforestry/ mixed systems	Firewood, soil enrichment, water conservation	Short (2-5yrs)		1400-2500	Variable soils
			<i>Schinus molle</i>	<i>Pepper tree</i>	Boundary/ ornamental planting	Amenity, fuel	Short (8-20 yrs)		1500-3000	Variable red to cotton loamy soils
			<i>Juniperus procera</i>	<i>Cedar</i>	Planation/ woodlots /mixed	Timber, posts, fencing, protection, fibre, lipids	Long (60-100 yrs)		1600-2000	Red loam to rocky shallow drained soils

ECO-ZONE	OND Average Seasonal Rainfall	OND 2018 Forecast average season rainfall	Tree Species	Common Name	Management Options	End Use	Rotation	Tree/fruit Nurseries	Altitude (m)	Preferred Soil Type
			<i>Macheria tippu</i> or <i>Tipuana tipu</i>	Tipuana tipu Rosewood, tipuana tree	Plantation/mixed	Timber	Medium (30-40 yrs)		1600-2000	Red loams to black cotton soils
			<i>Olea africana</i>	Mutamaiyu	Mixed planting	Beams, posts, carvings, fencing, wood fuel	Long (80-120 yrs)		1600-2000	Red to clay loamy soils
			<i>Jacaranda mimosifolia</i>	<i>Jacaranda</i>	Single tree management	Amenity, shade, apiculture, timber, medicinal	Short (4-10 yrs)		1600-2500	Variable soils
			<i>Brachylaena huillensis</i>	Muhugu	Woodlot, mixed, enrichment system	Timber, fencing, carving	Long (60-100 yrs)		200-1850	Mainly red loamy and sandy soils
			<i>Dovyalis caffra</i> synonym <i>Aberia caffra</i>	Kei apple	Hedge management	Hedge	Short to medium (8-25 yrs)		1400-2200	Variable Soils
IV (400 - 800mm rainfall) - LOWLA	200-400 mm	400mm	<i>Borassus aethiopum</i>	Borassus palm	Mixed systems	Water conservation, palm wine, basketry	Medium to long (30-60 yrs)	<ul style="list-style-type: none"> <li>• <a href="#">KFS Ecosystem Conservators</a></li> <li>• <a href="#">KEFRI</a></li> </ul>	0 - 1400	Variable but mainly riparian, sandy, well-drained soils, but prefers alluvial soils near watercourses

ECO-ZONE	OND Average Seasonal Rainfall	OND 2018 Forecast average season rainfall	Tree Species	Common Name	Management Options	End Use	Rotation	Tree/fruit Nurseries	Altitude (m)	Preferred Soil Type
NDS			<i>Calliandra calothyrsus</i>	Calliandra	Agroforestry system	Fuel, soil nutrient enhancing, fibre, apiculture	Short (4-10 yrs)	<a href="#">Centers</a>	0-1400	Variable
			<i>Senna siamea</i>	Senna	Plantation/mixed	Timber, fuel, fencing	Short (4-10 yrs)		0-1400	Sandy to sandy-loam
			<i>Casuarina equisetifolia</i>	Whispering pine	Plantation /agroforestry	Timber, fuel, amenity, fibre, medicinal, tannins	Short (4-6 yrs)		0-1400	Sandy soils
			<i>Chlorophora excelsa</i>	Mvule	Plantation/mixed system	Timber, shade	Medium to long (30-60 yrs)		0-1400	Red caly-loamy to sandy loamy soils
			<i>Dalbergia melanoxylon</i>	Mpingo	Plantation/mixed	Timber, fuel, fencing, wood carving, medicinal etc	Long (80-120 yrs)		0-1400	Variable, sandy to sandy-clay, black cotton soils
			<i>Eucalyptus camaldulensis</i>	River red gum	Plantation/shelterbelt woodlot system	Fuel, poles, construction	Short (6-8 yrs)		0-1400	Red clay-loamy to sandy-loamy soils
			<i>Eucalyptus europhylla</i>	Blue gum	Plantation/woodlots	Fuel, poles, posts	Short (5-12yrs)		0-1400	Sandy to clay loams
			<i>Gmelina arborea</i>	Gmelina, white teak	Plantation	Timber, paper, match box, construction,	Short (15-25yrs)		0-1400	Sandy to sandy loam soils moist, fertile, freely drained soils; acid soils, calcareous



ECO-ZONE	OND Average Seasonal Rainfall	OND 2018 Forecast average season rainfall	Tree Species	Common Name	Management Options	End Use	Rotation	Tree/fruit Nurseries	Altitude (m)	Preferred Soil Type
						fuel, medicinal				soils and laterite soils
			<i>Leucaena leucocephala</i>	<i>Leucaena</i>	Woodlots/ agroforestry systems	Fuel, fodder, nutrient enhancement trees	Short (4-10 yrs)		0-1400	Clay-loamy to sandy soils
			<i>Markhamia lutea</i>	Muu (Kik), Siala (Luhya), Markhamia	Plantation/ amenity agroforestry system	Timber/amenity/soil nutrient input	Short (15-30 yrs)		0-1400	Red loam to clay loamy soils
			<i>Terminalia brownii</i>	Mururuku (Kik)	Woodlots, mixed plantings	Fuel, fodder, posts, medicinal, shade	Short (6-15 yrs)		0-1400	Sandy to sandy/clay loams
			<i>Azadirachta indica</i>	Mwarobaini kamili, Neem	Mixed/enrichment planting system	Timber, fuel, posts, fodder, medicinal	Short 15-25 yrs		0-1400	Sandy to sandy-clay soils to riverine clay/sandy soils
			<i>Dalbergia melanoxylon</i>	Mpingo	Woodlot/mixed enrichment systems	Timber, fuel, poles, carvings	Medium to long (30-60 yrs)		0-1400	Sandy to sandy-clay soils to riverine clay/sandy soils
			<i>E. camaldulensis</i>	River red gum	Plantation/ woodlot/ boundary plantings	Fuel, poles, posts	Short (6-8 yrs)		0-1400	Sandy to sandy-clay soils to riverine clay/sandy soils

ECO-ZONE	OND Average Seasonal Rainfall	OND 2018 Forecast average season rainfall	Tree Species	Common Name	Management Options	End Use	Rotation	Tree/fruit Nurseries	Altitude (m)	Preferred Soil Type
			<i>Gliricidia sepium</i>	Gliricidia	Woodlots/ agroforestry systems	Fuel, fodder, nutrient enhancement trees, apiculture, shade, timber	Short (4-10 yrs)	<ul style="list-style-type: none"> <li>• <a href="#">KFS Ecosystem Conservators</a></li> <li>• <a href="#">KEFRI Centers</a></li> </ul>	0-1600	Clay-loamy to sandy soils
			<i>Ficus sycomorus</i>	Mukuyu (Kik), Sycamore (Eng)	Mixed systems	Water conservation, fodder medicinal, shade, food, fibre	Medium to long (30-60 yrs)		0-2000	Riparian soils
			<i>Leucaena leucocephala</i>	Leucaena	Mixed, agroforestry systems	Fuel, fodder, agroforestry, benefit	Short (4-10 yrs)		0-2000	Variable but prefers slightly alkaline
			<i>Faidherbia albida</i>	<i>Olasiti (Maa) Ana-tree</i>	Mixed, woodlot, riverine plantings	Fuel, poles, apiculture	Short (6-15 yrs)		1000-1400	Sandy to sandy-clay soils to riverine clay/sandy soils
			<i>Senegalia senegal Syn: Acacia senegal</i>	Gum arabic, Enderkesi (Maa)	Woodlot/mixed enrichment	Fuel, poles, gum arabic production, apiculture	Short 15-25 yrs		1000-1400	Sandy to sandy-clay soils to riverine clay/sandy soils
			<i>Vachellia tortilis (Syn: Acacia tortilis)</i>	Sagararam (Maa) umbrella thorn	Mixed enrichment /agroforestry	Fuel, poles, fodder, apiculture	Short 15-25 yrs		1000-1400	Sandy to sandy-clay soils to riverine clay/sandy soils

ECO-ZONE	OND Average Seasonal Rainfall	OND 2018 Forecast average season rainfall	Tree Species	Common Name	Management Options	End Use	Rotation	Tree/fruit Nurseries	Altitude (m)	Preferred Soil Type
			<i>Senegalia polyacantha</i> (Syn: <i>Acacia polyacantha</i> )	White thorn	Mixed/woodlot systems	Fuel, poles, apiculture	Short 15-25 yrs	<ul style="list-style-type: none"> <li>• <a href="#">KFS Ecosystem Conservators</a></li> <li>• <a href="#">KEFRI Centers</a></li> </ul>	1000-1400	Sandy to sandy-clay soils to riverine clay/sandy soils
			<i>Vachellia seyal</i> (Syn: <i>Acacia seyal</i> )	Oljerai (Maa)Shittim wood	Woodlot/mixed enrichment planting system	Fuel, poles, posts, apiculture	Short 15-25 yrs		1000-1400	Sandy clay to sandy loam soils
			<i>Melia volkensii</i>	Mukau (Ka.) Melia (Eng)	Mixed/ agroforestry systems	Fuel, poles, fodder, timber, apiculture, fodder	Short 15-25 yrs		1000-1400	Sandy to sandy-clay soils to riverine clay/sandy soils sandy, clay and shallow stony.
			<i>Tamarindus indica</i>	Tamarind, Mkwaju (Swahili)	Mixed/ agroforestry systems amenity	Fuel, poles, fodder, fruits, apiculture, dye, shade timber	Short 15-25 yrs		1000-1400	Sandy to sandy-clay soils to riverine clay/sandy soils
			<i>Croton megalocarpus</i>	Mukinduri (Kik), Croton (Eng)	Woodlot/mixed enrichment systems	Fuel, Agropoles, medicinal, apiculture, timber, soil improver shade	Short to Medium (15-25 yrs)		1000-2000	Sandy to sandy-clay soils to riverine clay/sandy soils
			<i>Balanites aegyptiaca</i>	Desert date	Mixed/ enrichment planting system	Timber, fuel, edible fruits	Short 15-25 yrs		500-1400	Sandy to sandy-clay soils to riverine clay/sandy soils

ECO-ZONE	OND Average Seasonal Rainfall	OND 2018 Forecast average season rainfall	Tree Species	Common Name	Management Options	End Use	Rotation	Tree/fruit Nurseries	Altitude (m)	Preferred Soil Type
			<i>Azadirachta indica</i> (Mwarobaini)	Mwarobaini, Neem	Plantation/mixed	Timber, fuel, fencing, amenity, medicinal	Short (6-15 yrs)		0 - 1400	Sandy to sandy-loam
V - VI (Under 400 mm rainfall)	< 200 mm	200mm (Normal)	<i>Brachystegia spiciformis</i>	Mrithi, zebra wood, bean-pod tree (Eng)	Mixture/enrichment/natural system	Timber, railway sleepers. Ornamental, medicinal, apiculture, fuel, fibre, fodder, tannins	Long (60-100yrs)	<ul style="list-style-type: none"> <li>• <a href="#">KFS Ecosystem Conservators</a></li> <li>• <a href="#">KEFRI Centers</a></li> </ul>	0-200	Red loamy to clay loam sandy soils, avoids poorly drained shallow soils
			<i>Hyphaene coriacea</i>	Doum palm	Mixed systems	Water conservation, basketry	Medium to long (30-60 yrs)		0-1000	Sandy riparian soils
			<i>Senegalia senegal</i> (Syn: <i>Acacia senegal</i> )	Gum arabic, Enderkesi (Maa)	Woodlot/mixed/enrichment planting	Fuel, poles, gum arabic	Short 15-25 yrs		1000-1400	Sandy clay to sandy loam soils
			<i>Cordia sinensis</i>	Oseki (Maa) grey-leaved cordia (Eng)	Woodlot/enrichment systems	Fuel, poles, fodder, timber, gum, food	Short to Medium (15-25 yrs)		1000-1500	Sandy clay to sandy loam soils

ECO-ZONE	OND Average Seasonal Rainfall	OND 2018 Forecast average season rainfall	Tree Species	Common Name	Management Options	End Use	Rotation	Tree/fruit Nurseries	Altitude (m)	Preferred Soil Type
			<i>Salvadora persica</i>	Toothbrush tree, mustard tree, mustard bush	Woodlot/enrichment systems	Fodder, soil, protection, amenity, food, timber, tannins, apiculture, shade, reclamation	Short to Medium (15-25 yrs)	<ul style="list-style-type: none"> <li>• <a href="#">KFS Ecosystem Conservators</a></li> <li>• <a href="#">KEFRI Centers</a></li> </ul>	1000-1500	Sandy clay to sandy loam soils
			<i>Ziziphus mauritiana</i>	Chinee apple, jujube, Indian plum Mkunazi (Swahili)	Hedge planting management	Live fencing, fruits, food, fuel, alcohol, medicinal	Short to Medium (15-25 yrs)		1000-1500	Sandy clay to sandy loam soils
			<i>Vachellia tortilis</i> (Syn: <i>Acacia tortilis</i> )	<i>Sagararam</i> (Maa)	Mixed, enrichment, agroforestry systems	Fuel, poles, fodder, apiculture	Short to medium 15-25 yrs		1000-1400	Sandy clay to sandy loam soils

Attached is the list of:

- [Kenya Forest Service Ecosystem Conservator Offices](#)
- [KEFRI Centres and Sub-centres](#)
- [Agro-Ecological Zones Map](#)
- [Predicted Rainfall distribution map \(October-November-December 2018\)](#)

## **KFS Ecosystem Conservator Offices**

### **Ecosystem Conservator Kiambu**

Muguga,  
P.o. Box 74  
Kikuyu  
Telephone: 0709751822  
Email: [zmkiambu@kenyaforestservice.org](mailto:zmkiambu@kenyaforestservice.org)

### **Ecosystem Conservator Murang'a**

Murang'a Town,  
P.o. Box 546  
Murang'a  
Telephone: 0572511152  
Email: [zmmuranga@kenyaforestservice.org](mailto:zmmuranga@kenyaforestservice.org)

### **Ecosystem Conservator Kirinyaga**

Kirinyaga Town,  
P.o. Box 22  
Kutus  
Telephone: 0709751824  
Email: [zmkirinyaga@kenyaforestservice.org](mailto:zmkirinyaga@kenyaforestservice.org)

### **Ecosystem Conservator Nyeri**

Nyeri Town,  
P.o. Box 28  
Nyeri  
Telephone: 0709751871  
Email: [zmnyeri@kenyaforestservice.org](mailto:zmnyeri@kenyaforestservice.org)

### **Ecosystem Conservator Nyandarua**

Ol-karau Town,  
P.o. Box 289  
Ol-kalau  
Telephone: 0709751823  
Email: [zmnyandarua@kenyaforestservice.org](mailto:zmnyandarua@kenyaforestservice.org)

### **Ecosystem Conservator Laikipia**

Nyahururu,  
P.o. Box 8,  
Nyahururu  
Telephone: 0722 336596  
Email: [zmlaikipia@kenyaforestservice.org](mailto:zmlaikipia@kenyaforestservice.org)

### **Ecosystem Conservator Nairobi**

Ngong Road Forest Station  
P.o. Box 30513  
Nairobi  
Email: [zmnairobi@kenyaforestservice.org](mailto:zmnairobi@kenyaforestservice.org)

### **Ecosystem Conservator Embu**

Embu Town, Opposite Embu Police HQS  
P.o. Box 2  
Embu  
Telephone: 0709751860  
Email: [zmembu@kenyaforestservice.org](mailto:zmembu@kenyaforestservice.org)

### **Ecosystem Conservator Meru**

Meru Town,  
P.o. Box 110  
Meru  
Telephone: 0709751857  
Email: [zmmerucentral@kenyaforestservice.org](mailto:zmmerucentral@kenyaforestservice.org)

### **Ecosystem Conservator Tharaka Nithi**

Chuka Town,  
P.o. Box 210  
Chuka  
Telephone: 0709751841  
Email: [zmtharaka@kenyaforestservice.org](mailto:zmtharaka@kenyaforestservice.org)

### **Ecosystem Conservator Kitui**

Kitui Town,  
P.o. Box 106  
Kitui  
Cellphone: 0709751858  
Email: [zmkitui@kenyaforestservice.org](mailto:zmkitui@kenyaforestservice.org)

### **Ecosystem Conservator Machakos**

Machakos Town,  
P.o. Box 2  
Machakos  
Telephone: 0709751872  
Email: [zmmachakos@kenyaforestservice.org](mailto:zmmachakos@kenyaforestservice.org)

### **Ecosystem Conservator Makueni**

Wote Town,  
P.o. Box 395  
Wote  
Telephone: 0202338589  
Email: [zmmakueni@kenyaforestservice.org](mailto:zmmakueni@kenyaforestservice.org)

### **Ecosystem Conservator Garissa**

Garissa Town,  
P.o. Box 89  
Garissa  
Telephone: 0709751859  
Email: [zmgarissa@kenyaforestservice.org](mailto:zmgarissa@kenyaforestservice.org)

**Ecosystem Conservator Wajir**

Wajir Town,  
P.o. Box 48  
Wajir  
Telephone:0709751875  
Email: [zmwajir@kenyaforestservice.org](mailto:zmwajir@kenyaforestservice.org)

**Ecosystem Conservator Mandera**

Mandela Town,  
P.o. Box 65  
Mandera  
Telephone: 0709751842  
Email: [zmandela@kenyaforestservice.org](mailto:zmandela@kenyaforestservice.org)

**Ecosystem Conservator Isiolo**

Isiolo Town,  
P.o. Box 141  
Isiolo  
Telephone: 0709751840  
Email: [zmisiolo@kenyaforestservice.org](mailto:zmisiolo@kenyaforestservice.org)

**Ecosystem Conservator Marsabit**

Marsabit Town,  
P.o. Box 27  
Marsabit  
Telephone: 0692072  
Email: [zmmarsabit@kenyaforestservice.org](mailto:zmmarsabit@kenyaforestservice.org)

**Ecosystem Conservator Samburu**

Maralal Town,  
P.o. Box 110  
Maralal  
Telephone:0709751862  
Email: [zmsamburu@kenyaforestservice.org](mailto:zmsamburu@kenyaforestservice.org)

**Ecosystem Conservator Mombasa**

Mombasa Town, Kenya Forest Building  
P.o. Box 80078  
Mombasa  
Telephone: 02035022903  
Email: [zmmombasa@kenyaforestservice.org](mailto:zmmombasa@kenyaforestservice.org)

**Ecosystem Conservator Taita Taveta**

Wundanyi Town,  
P.o. Box 1043  
Wundanyi  
Telephone: 0709751874  
Email: [zmtaitaveta@kenyaforestservice.org](mailto:zmtaitaveta@kenyaforestservice.org)

**Ecosystem Conservator Kwale**

Kwale Town,  
P.o. Box 5  
Kwale  
Telephone: 0709748858  
Email: [zmkwale@kenyaforestservice.org](mailto:zmkwale@kenyaforestservice.org)

**Ecosystem Conservator Kilifi**

Kilifi Town,  
P.o. Box 247  
Kilifi  
Telephone: 0709751870  
Email: [zmkilifi@kenyaforestservice.org](mailto:zmkilifi@kenyaforestservice.org)

**Ecosystem Conservator Lamu**

LamuTown,  
P.o. Box 7  
Mokowe  
Telephone: 0709751864  
Email: [zmlamu@kenyaforestservice.org](mailto:zmlamu@kenyaforestservice.org)

**Ecosystem Conservator Tana River**

Hola Town,  
P.o. Box 18  
Hola  
Telephone: 0709751869  
Email: [zmtanariver@kenyaforestservice.org](mailto:zmtanariver@kenyaforestservice.org)

**Ecosystem Conservator Nakuru**

Elbagon Town,Elburgon near Timsales  
P.o. Box 25  
Nakuru  
Telephone: 0709751829  
Email: [zmnakuru@kenyaforestservice.org](mailto:zmnakuru@kenyaforestservice.org)

**Ecosystem Conservator Baringo**

Eldamaravin Town,  
P.o. Box 54  
Kabarnet  
Telephone: 0709748860  
Email: [zmbaringo@kenyaforestservice.org](mailto:zmbaringo@kenyaforestservice.org)

**Ecosystem Conservator Narok**

Narok Town,  
P.o. Box 34  
Narok  
Telephone: 0709751873  
Email: [zmnarok@kenyaforestservice.org](mailto:zmnarok@kenyaforestservice.org)

**Ecosystem Conservator Kajiado**

KajiadoTown,  
P.o. Box 229  
Kajiado  
Telephone: 04521150  
Email: [zmkajiado@kenyaforestservice.org](mailto:zmkajiado@kenyaforestservice.org)

**Ecosystem Conservator Kericho**

Londiani College  
P.o. Box 1  
Londiani  
Telephone: 0709751825  
Email: [zmkericho@kenyaforestservice.org](mailto:zmkericho@kenyaforestservice.org)

**Ecosystem Conservator Bomet**

Bomet Town,  
P.o. Box 304  
Bomet  
Telephone:0709751807  
Email: [zmbomet@kenyaforestservice.org](mailto:zmbomet@kenyaforestservice.org)

**Ecosystem Conservator Uasin Gishu**

Eldoret Town,  
P.o. Box 41  
Eldoret  
Telephone: 0709748857  
Email: [zmuasingishu@kenyaforestservice.org](mailto:zmuasingishu@kenyaforestservice.org)

**Ecosystem Conservator Nandi**

Kapsabet Town,  
P.o. Box 235  
Kapsabet  
Telephone:0709751861  
Email: [zmnandinorth@kenyaforestservice.org](mailto:zmnandinorth@kenyaforestservice.org)

**Ecosystem Conservator Turkana**

Lodwar Town,  
P.o. Box 39  
Lodwar  
Telephone: 0709751831  
Email: [zmturkana@kenyaforestservice.org](mailto:zmturkana@kenyaforestservice.org)

**Ecosystem Conservator West Pokot**

Kapenguria Town,  
P.o. Box 42  
Kapenguria  
Telephone: 0709751844  
Email: [zmwestpokot@kenyaforestservice.org](mailto:zmwestpokot@kenyaforestservice.org)

**Ecosystem Conservator Trans-nzoia**

Kitale Town,  
P.o. Box 99  
Kitale  
Telephone: 0709748864  
Email: [zmtransnzoia@kenyaforestservice.org](mailto:zmtransnzoia@kenyaforestservice.org)

**Ecosystem Conservator Elgeyo-Marakwet**

ItenTown,  
P.o. Box 397  
Iten  
Telephone: 0709748859  
Email: [zmmarakwet@kenyaforestservice.org](mailto:zmmarakwet@kenyaforestservice.org)

**Ecosystem Conservator Kakamega**

KakamegaTown,  
P.o. Box 1233  
Kakamega  
Telephone: 0709751830  
Email: [zmkakamega@kenyaforestservice.org](mailto:zmkakamega@kenyaforestservice.org)

**Ecosystem Conservator Vihiga**

Maragoli Town,  
P.o. Box 781  
Maragoli  
Telephone: 05651194  
Email: [zmvihiga@kenyaforestservice.org](mailto:zmvihiga@kenyaforestservice.org)

**Ecosystem Conservator Bungoma**

BungomaTown,  
P.o. Box  
Bungoma  
Telephone: 0208004832  
Email: [zmbungoma@kenyaforestservice.org](mailto:zmbungoma@kenyaforestservice.org)

**Ecosystem Conservator Busia**

Busia Town,  
P.o. Box 111  
Busia  
Telephone: 0709751827  
Email: [zmbusia@kenyaforestservice.org](mailto:zmbusia@kenyaforestservice.org)

**Ecosystem Conservator Kisumu**

Kisumu Town,  
P.o. Box 1048  
Kisumu  
Telephone: 0709751796  
Email: [zmkisumu@kenyaforestservice.org](mailto:zmkisumu@kenyaforestservice.org)



**Ecosystem Conservator Siaya**

Siaya Town,  
P.o. Box 376  
Siaya  
Telephone: 0709751880  
Email: [zmsiaya@kenyaforestservice.org](mailto:zmsiaya@kenyaforestservice.org)

**Ecosystem Conservator Homa Bay**

Homa Bay Town,  
P.o. Box 46  
Homa Bay  
Telephone:0709751821  
Email: [zmhomabay@kenyaforestservice.org](mailto:zmhomabay@kenyaforestservice.org)

**Ecosystem Conservator Migori**

Migori Town,  
P.o. Box 21  
Migori  
Telephone: 0770474909  
Email: [zmmigori@kenyaforestservice.org](mailto:zmmigori@kenyaforestservice.org)

**Ecosystem Conservator Kisii**

Kisii Town,  
P.o. Box 775  
Kisii  
Telephone:0709751878  
Email: [zmkisii@kenyaforestservice.org](mailto:zmkisii@kenyaforestservice.org)

**Ecosystem Conservator Nyamira**

Nyamira Town, KFS Building Behind Governor's  
Office  
P.o. Box 46  
Konate Nyamira  
Telephone: 0709751879  
Email: [zmnyamira@kenyaforestservice.org](mailto:zmnyamira@kenyaforestservice.org)

## **KEFRI CENTRES AND SUB-CENTRES**

### **KEFRI MUGUGA (HQ)**

P.O BOX 20412 - 00200 Nairobi  
[enterprise@kefri.org](mailto:enterprise@kefri.org)  
020 236 5157, +254 (0) 722 629 905

### **KEFRI MUGUGA (SEED CENTER)**

P.O BOX 20412 - 00200 Nairobi  
[esseedcenter@kefri.org](mailto:esseedcenter@kefri.org)  
+254 (0) 728 755 919

### **KEFRI NYERI SUB-CENTRE**

P.O BOX 12069 Nyeri  
+254 20 2386354

### **KEFRI KITUI**

P.O BOX 892-90200 Kitui  
[eskitui@kefri.org](mailto:eskitui@kefri.org)  
+254 (0) 722 938 716  
+254 20 23863/5/6

### **KEFRI KIBWEZI SUB-CENTRE**

P.O BOX 87 – 90137 Kibwezi  
+254 572 508 150

### **KEFRI GARISSA SUB-CENTRE**

P.O BOX 1483 – 70100 Garissa  
+254 774 193 295

### **KEFRI LONDIANI**

P.O BOX 382 -20203 Londiani  
[cldodiani@kefri.org](mailto:cldodiani@kefri.org)  
+254 (0) 728 755 919

### **KEFRI BARINGO SUB-CENTRE (MARIGAT)**

P.O BOX 57 30403 Marigat  
[esbaringo@kefri.org](mailto:esbaringo@kefri.org)  
+254 (0) 721 648 446

### **KEFRI TURBO SUB-CENTRE**

P.O BOX 5 Turbo  
+254 20 2579856,  
+254 722 673759

### **KEFRI TURKANA (LODWAR)**

P.O BOX 468 Lodwar  
[eslodwar@kefri.org](mailto:eslodwar@kefri.org)  
+254 (0) 713 503 615

### **KEFRI MASENO**

P.O BOX 25199 – 40108 Otonglo, Kisumu  
[cdmaseno@kefri.org](mailto:cdmaseno@kefri.org)  
+254 (0) 713 687975  
+254 573 51164

### **KEFRI MIGORI SUB-CENTRE**

P.O BOX 25199 – 40108 Otonglo, Kisumu

### **KEFRI KAKAMEGA**

P.O BOX 1901 Kakamega  
+254 57 250 0138

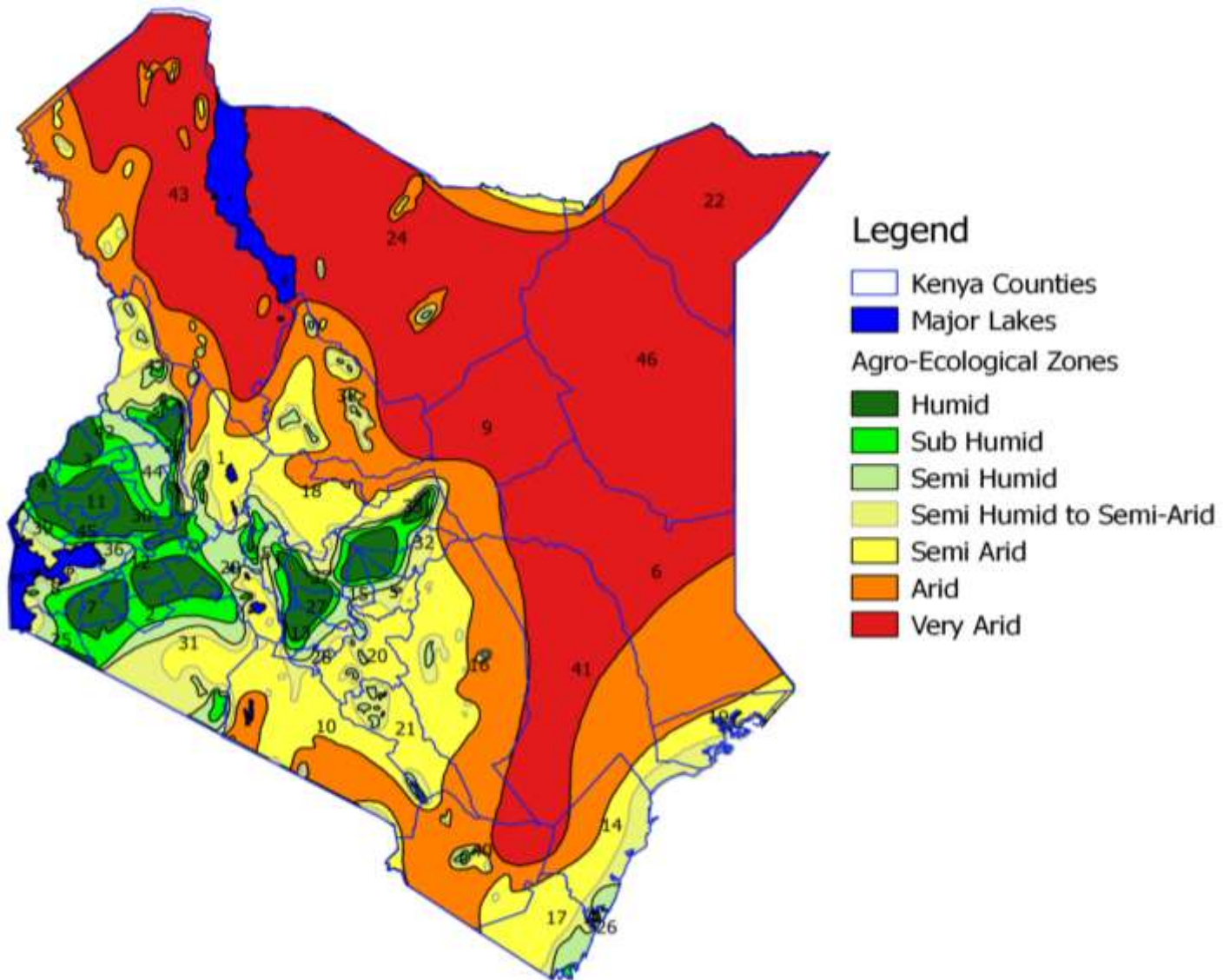
### **KEFRI GEDE**

P.O BOX 1078-80200 Malindi  
[eslamu@kefri.org](mailto:eslamu@kefri.org)  
[cdgede@kefri.org](mailto:cdgede@kefri.org)  
+254 (0) 710 719 855, +254 42 32022

### **KEFRI LAMU SUB-CENTRE**

P.O BOX 71 - 80502 Mokowe

## Counties and Agro-Ecological Zone



### Legend

- Kenya Counties
- Major Lakes
- Agro-Ecological Zones**
- Humid
- Sub Humid
- Semi Humid
- Semi Humid to Semi-Arid
- Semi Arid
- Arid
- Very Arid

1 BARINGO	13 KIAMBU	25 MIGORI	37 NYERI
2 BOMET	14 KILIFI	26 MOMBASA	38 SAMBURU
3 BUNGOMA	15 KIRINYAGA	27 MURANGA	39 SIA YA
4 BUSIA	16 KITUI	28 NAIROBI	40 TAITA TAVETA
5 EMBU	17 KWALE	29 NAKURU	41 TANA RIVER
6 GARISSA	18 LAIKIPIA	30 NANDI	42 TRANS NZOIA
7 KISII	19 LAMU	31 NAROK	43 TURKANA
8 HOMA BAY	20 MACHAKOS	32 THARAKA	44 UASIN GISHU
9 ISIOLO	21 MAKUENI	33 MERU	45 VIHIGA
10 KAJIADO	22 MANDERA	34 NYAMIRA	46 WAJIR
11 KAKAMEGA	23 MARAKWET	35 NYANDARUA	47 POKOT
12 KERICHO	24 MARSABIT	36 KISUMU	

## Forecast for the Season of October- November- December 2018

