



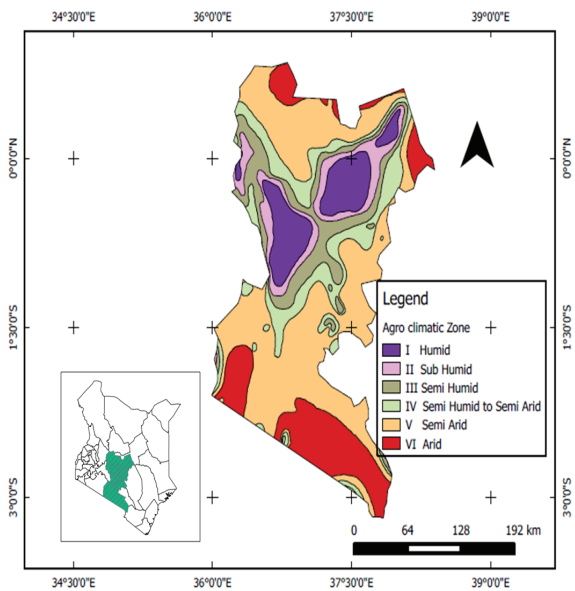
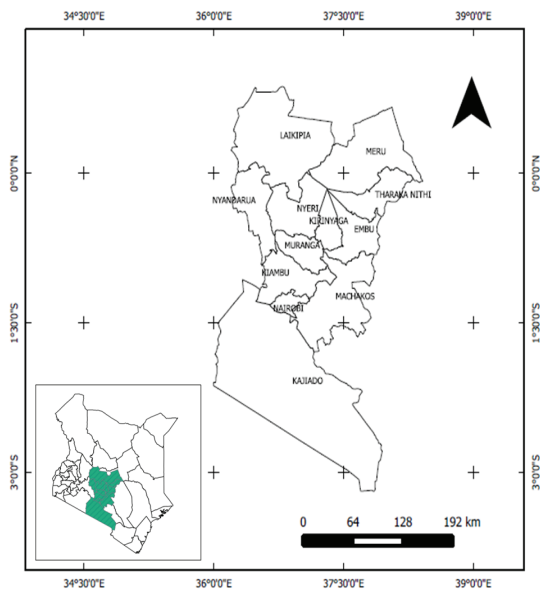
Kenya Forestry Research Institute (KEFRI)

USEFUL TREES SUITABLE FOR CENTRAL HIGHLANDS ECO-REGION

Tree growing has increased over the last few decades in the central highlands eco-region due to increasing demand for products and services. Trees are grown for both subsistence and commercial purposes mainly to meet demand for timber, poles, firewood and charcoal. Trees provide services such as soil erosion control, riverbank stabilization, shade, and ornamental. Tree growing is also a climate change

mitigation strategy. However, tree growing is hampered by inadequate knowledge in matching tree species to the appropriate site. This publication is intended to raise awareness on important tree species and their potential growing areas. It targets the general public in central highlands eco-region of Kenya.

Botanical Names	Common Names	Major Uses	Agro-climatic Zone
<i>Acacia kirkii</i>	Ol-lerai	Firewood, charcoal	III
<i>Acacia mearnsii</i>	Black wattle	Firewood, poles	I-III
<i>Acacia polyacantha</i>	Falcons-claw acacia	Charcoal, firewood	III-IV
<i>Acrocarpus fraxinifolius</i>	Shingle tree	Timber, firewood	II-V
<i>Brachylaena huillensis</i>	Muhugu	Carvings, poles	II-III
<i>Calodendrum capense</i>	Cape chestnut	Timber, firewood	III
<i>Casaeria battiscombei</i>	Muirungi	Timber, firewood	1-II
<i>Casimiroa edulis</i>	White sapote	Fruit, shade	II-IV
<i>Casuarina cunninghamiana</i>	River oak	Poles, firewood	II-IV
<i>Combretum molle</i>	Murema	Firewood, charcoal	II-V
<i>Cordia africana</i>	Muringa	Timber, beehives	II-III
<i>Croton macrostachys</i>	Mutundu	Firewood, charcoal	I-III
<i>Croton megalocarpus</i>	Mukinduri	Firewood, charcoal	III
<i>Cupressus lusitanica</i>	Cypress	Timber, firewood	II-III
<i>Eriobotrya japonica</i>	Loquat	Fruits, firewood	II-III
<i>Eucalyptus camaldulensis</i>	River red gum	Timber, firewood	II-IV
<i>Eucalyptus hybrids</i>	Var. EG, GU7 GC462	Timber, firewood	I-II
<i>Eucalyptus hybrids</i>	Var. GC581, GC15, GC14	Timber, firewood	II-III
<i>Eucalyptus globulus</i>	Tasmanian blue gum	Timber, firewood	I-IV
<i>Eucalyptus grandis</i>	Blue gum	Timber, firewood	I-III
<i>Eucalyptus saligna</i>	Sydney blue gum	Timber, firewood	I-III
<i>Fraxinus pennsylvanica</i>	Mexican ash	Timber firewood	II-III
<i>Grevillea robusta</i>	Silky oak	Timber, firewood	II-IV
<i>Jacaranda mimosifolia</i>	Jacaranda	Firewood, carvings	II-V
<i>Juniperus procera</i>	E.A. Cedar	Timber, firewood	III
<i>Markhamia lutea</i>	Muu	Timber, firewood	II-III
<i>Melia volkensii</i>	Mukau	Timber, firewood	IV-V
<i>Milicia excelsa</i>	Mvule	Timber, firewood	I-II
<i>Myrianthus holstii</i>	Giant	Fruits, cultural	I-II
<i>Ocotea usambarensis</i>	E.A. camphor	Timber, firewood	I-II
<i>Olea capensis</i>	E.A olive	Timber, firewood	II-III
<i>Osyris lanceolata</i>	E.A. sandalwood	Perfumery	II-IV
<i>Pinus radiata</i>	Pine	Timber, firewood	I-III
<i>Podocarpus falcatus</i>	Podo	Timber, firewood	II-III
<i>Podocarpus latifolius</i>	Podo	Timber, firewood	I-II
<i>Polyscias fulva</i>	Mutati	Timber, firewood	I-II
<i>Pouteria adolfi-friedericii</i>	Muna	Timber, firewood	I-II
<i>Prunus africana</i>	Red stinkwood	Timber, firewood	I-III
<i>Sclerocarya birrea</i>	Marula	Fruits, firewood	III-V
<i>Senna siamea</i>	Senna	Poles, firewood	III-V
<i>Spathodea campanulata</i>	Nandi flame	Ornamental	II-III
<i>Syzygium cumini</i>	Jambolana	Timber, fruits	II-IV
<i>Syzygium guineense</i>	Mukoe	Timber, fruits	II-III
<i>Tamarindus indica</i>	Tamarind	Fruit, firewood	III-V
<i>Terminalia brownii</i>	Mururuku	Timber, firewood	IV-V
<i>Vanguaria madagascariensis</i>	Mubiru	Fruit, firewood	II-V
<i>Vitex keniensis</i>	Meru oak	Timber, firewood	II-III
<i>Vitex payos</i>	Black plum	Fruit, firewood	III-IV
<i>Warburgia ugandensis</i>	E.A. Greenheart	Medicine, timber	III
<i>Zanthoxylum gillettii</i>	African satinwood	Timber, firewood	II



Central highlands eco-region showing counties and Agro climatic Zones (AcZ)

County	Major areas	AcZ
Embu	Manyatta	I,II
	Runyenjes	I,II,III
	Mbeere South	III,IV,V
	Mbeere North	III,IV,V
Kajiado	Kajiado North	IV,V
	Kajiado Central	V,VI
	Kajiado South	V,VI
Kiambu	Githunguri	I,II,III
	Kiambaa	I,II,III
	Kikuyu	II,III,IV,V
	Lari	I,II,III
	Limuru	I,II,III,IV,V
	Gatundu Thika	I,II,III III,IV,V
Kirinyaga	Gichugu	I,II
	Mwea	III,IV
	Ndia	I,II,III
Laikipia	Laikipia West	III,IV,V
	Laikipia East	V
	Laikipia North	V,VI
Machakos	Kangundo	III,IV,V
	Kathiani	III,IV,V
	Machakos Central	IV,V
	Machakos Yatta	V
	Mwala	V
	Athi river	v
	Masinga	v
	Matungulu	II,IV,V
Murang'a	Kandara	I,II,III
	Kigumo	I,II
	Makuyu	III,IV
	Maragua	II,III
	Kangema	I,II
	Kiharu	II,III
	Mathioya	I,II
	Gatanga	I,II,III

County	Major areas	AcZ
Nairobi	Dagoretti	III
	Embakasi	IV,V
	Kibera	III,IV
	Makadara	III,IV
	Starehe	III
	Westlands	III
Nyeri	Kieni	II,III,IV,V
	Othaya	I,II
	Mathira	I,II,III
	Mukurweini Tetu	I,II,III I,II
Nyandarua	Kinangop	I,II,III
	Kipipiri	I,II,III,IV
	Ol-kalou	II,III,IV
	Ndaragwa	I,II,III
Meru	Timau	II,III,IV,V
	Abothuguchi	I,II,III
	Tigania	I,II,III,IV,V
	Igembe	I,II,III,IV,V,VI
	Maua	I,II,III,IV,V
	Igoji Imenti	I,II II,III,IV,V
Tharaka Nithi	Tharaka North	IV,V,VI
	Tharaka Central	IV
	Tharaka South	IV,V
	Chuka	I,II,III

Compiled by: F. Gachathi, J. Ngugi, S. Omondi

JUNE 2014

Contact

Central Highlands Eco-region Research Programme

Tel: +254-72425978/2, 0202116399, 0734251888

P.O Box 20412 00200 Nairobi Kenya

Email: cdmuguga@kefri.org

Website www.kefri.org